



**Edificio Miami**  
paseo Miguel de Unamuno, 41020.  
Sevilla - Sevilla Este



## General Information

### Come to live in Edificio Miami

2, 3 and 4 bedrooms houses

2 pools (adults and children)

Playground

Parking

Lumber room

Miami Building is exclusively designed for your comfort and the comfort of your family. Enjoy a new home full of details in one of the best areas in East Seville.

You'll want to take advantage of your leisure time to develop together with your family all these possibilities and the possibilities that you'll find out with the passage of the years.

Developed by: Inmobiliaria Osuna S.L.U



Office of Edificio Miami  
c/ Manila, 1, Edif. Marquesado, local 12, 41020  
Tlfnos 954 406 868 - 954 276 761

The information is provided as a guide. It is not binding and it has no contractual value. This information may have been subject to changes that have not yet been included due to technical reasons. Therefore, please contact the company to obtain the latest details and/or confirm the information stated here.



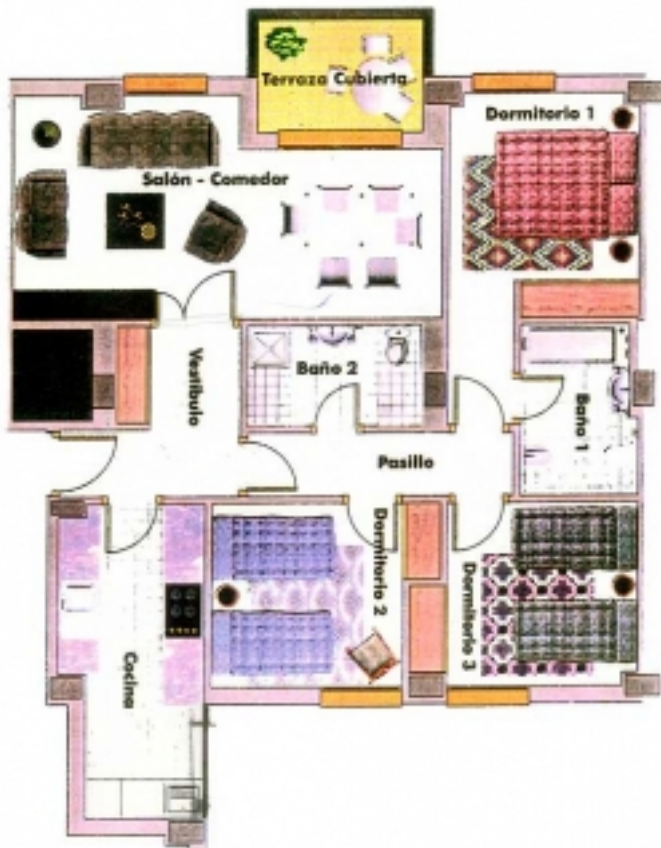
**Edificio Miami**  
paseo Miguel de Unamuno, 41020.  
Sevilla - Sevilla Este





Housing types

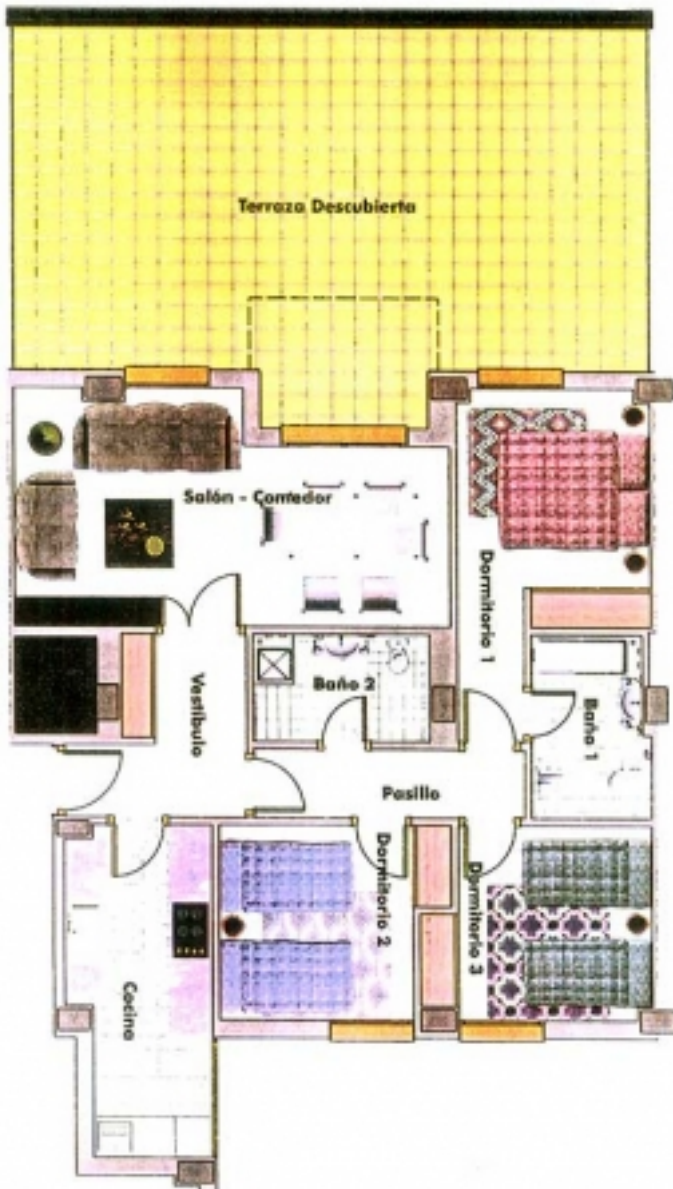
Flat with 3 rooms  
98,81 m<sup>2</sup>





Housing types

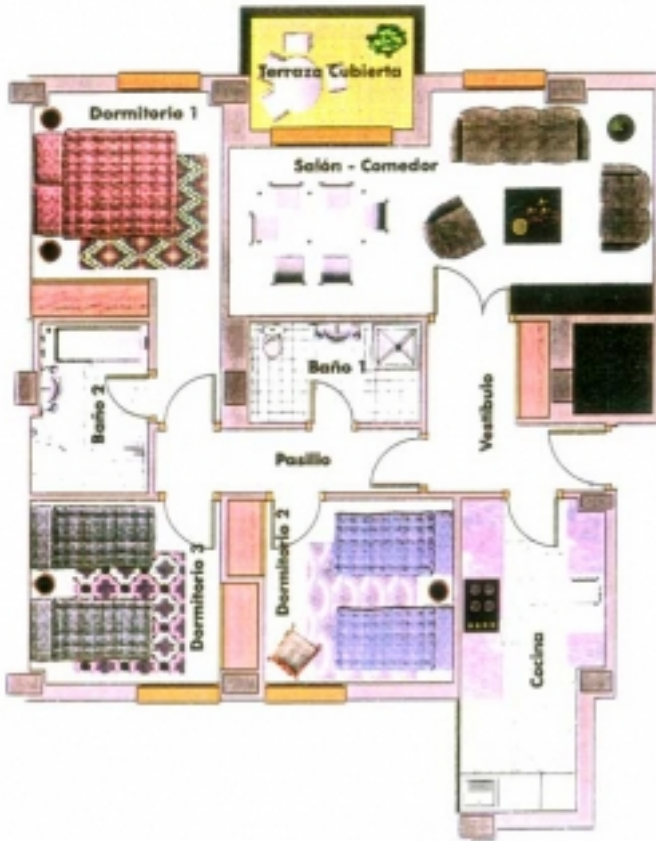
Flat with 3 rooms  
98,81 m<sup>2</sup>





Housing types

Flat with 3 rooms  
98,81 m<sup>2</sup>





## Specifications

### GENERAL CHARACTERISTICS

Foundations and structure: Reinforced concrete according to EHE, fulfilling the current standard.

Facade: Finished with face brick and a single layer of rendering. Air chamber with thermal insulation of polyurethane foam-in-place.

Roof: Passable andalusian type with thermal insulation.

### COVERINGS

Paving: Natural stone paving for common areas and apartments, except stoneware paving for kitchens and bathrooms.

Coatings:

Tiled walls of kitchens, bathrooms and laundry rooms with ceramic tiles and trim of up-to date design.

Gypsum plaster coating with hidden corner protectors in all edges.

Plaster mouldings in ceilings, except for kitchen.

Plaster false ceiling in kitchen and bathroom (in areas where it will be the location of the interior device of air conditioning ceiling will be dismantle).

Paint: Stippled-finished paint in apartments except for kitchen and bathroom that will be plastic paint.

Glazing: Glazing with mirror of 6mm on the outside, and printed of 4mm inside.

### JOINERY

Interior finishing work:

Reinforce DM lacquered entrance door with anti-jemmy hinges, security lock and peephole

Lacquered inside doors and D.M. moulding cover plates.

Living room, corridor and kitchen glazed doors.

Wardrobe doors with sheets of same quality.

Exterior finishing work:

White lacquered aluminium frames with splays integrated in the compact system.

Blinds with PVC slats.

### SANITARY WARE

Vitrified porcelain sanitary ware.

Enamelled metal baths.

Chrome single bloc mixer taps

### INSTALLATIONS

Air conditioning pre installation.

Plumbing made of standardize copper pipes. PVC drainpipes

Town gas installation

Sanitary hot water, by gas boiler of 13l.

Electronic entry phone.

Pre-installation of T.V telephone, according to infrastructure Royal Decree for telecommunications 279/99.

### COMMON AREAS

Adults and children swimming pool and solarium.



## Edificio Miami

paseo Miguel de Unamuno, 41020.

Sevilla - Sevilla Este



### Location of the development

East Seville, more Seville than ever. Inmobiliaria Osuna offers you a privileged environment on your doorstep, a place where you can enjoy your free time, your family and, at the same time, all the amenities of a large city.

East Seville has Shopping Centres, Hotels, Supermarkets, Schools, Health Centres... all the services you need. Improve your quality of life. East Seville, more Seville than ever.



**Edificio Miami**  
paseo Miguel de Unamuno, 41020.  
Sevilla - Sevilla Este



Office of Edificio Miami  
c/ Manila, 1, Edif. Marquesado, local 12, 41020  
Tlfno 954 406 868 - 954 276 761

The information is provided as a guide. It is not binding and it has no contractual value. This information may have been subject to changes that have not yet been included due to technical reasons. Therefore, please contact the company to obtain the latest details and/or confirm the information stated here.